

RENTAL EQUIPMENT

Catalog 2025

Please select your rental location for quick viewing.

Valleyview: 780-524-7621

Crooked Creek: 780-957-2201

Grovedale: 780-512-6239

VALLEYVIEW CONTENTS

	Picnic Tables	6
	Barbeque.....	7
Weed and Insect Control	Field Sprayer – 500G	8
	Boomless Field Sprayer – 500G.....	9
	Water Tank on Trailer	10
	Estate Sprayer – Pull Type	11
	Estate Sprayer – 3 pt Hitch	12
	Quad Mounted Sprayer.....	13
	Backpack Sprayer.....	14
	Grain Bag Roller	15
Spreaders	Manure Spreader	16
	Fertilizer Spreader.....	17
Earth Moving and Post Pounding Equipment	Earth Mover	18
	Pull Blade	19
	Post Pounder	20
	Bin Crane	21
Cattle Equipment	Cattle Squeeze	22
	Loading Chute.....	23
	Panel Trailer	24
	Tag Reader	25
Conservation Equipment	Heavy Harrows	26
	Land Roller	27
	Heavy Disc	28
	No Till Seed Drill	29
	Conservation Seeder	30
	Rotary Tiller.....	31
	Chisel Plow	32
	8’ Disc – 3 pt Hitch	33
	8’ Harrow – 3 pt Hitch	34
Pull Blade	35	

Conservation Equipment	Plastic Mulch Applicator	36
	Tree Planter	37
Broadcast Seeding Equipment	Truck Mount Seeder	38
	Quad Mount Seeder.....	39
	Hand Seeder	40
	Broadcast Seeder	41
Miscellaneous Equipment	Metal Detector	42
	Measuring Wheel, Bin Probe, Soil Sampler	43
	Hay Sampler	44
	Scare Cannons	45
	Small Animal Trap.....	46
	Grain Vac.....	47
	Bale Hauler	48
	Pressure Washer on Trailer	49
Water Pump and Pipe Trailer	50	

CROOKED CREEK CONTENTS

Weed and Insect Control	Field Sprayer – 300G	51
	Estate Sprayer – Pull Type	52
	Quad Mounted Sprayer.....	53
	Backpack Sprayer.....	54
Earth Moving and Post Pounding Equipment	Earth Mover	55
	Post Pounder	56
Cattle Equipment	Cattle Squeeze	57
	Loading Chute.....	58

GROVEDALE CONTENTS

Weed and Insect Control	Field Sprayer – 500G	59
	Boomless Field Sprayer – 300G.....	60
	Water Tank on Trailer	61
	Quad Mounted Sprayer.....	62
	Backpack Sprayer	63
Spreaders	Manure Spreader	64
	Fertilizer Spreader.....	65
Earth Moving and Post Pounding Equipment	Earth Mover	66
	Pull Blade	67
	V-Ditcher.....	68
	Post Pounder	69
	Bin Crane	70
Cattle Equipment	Cattle Squeeze	71
	Loading Chute.....	72
	Panel Trailer	73
	Tag Reader	74
Conservation Equipment	Heavy Harrows	75
	Land Roller	76
	Heavy Disc	77
Miscellaneous Equipment	Hay Sampler	78
	Small Animal Trap.....	79
	Grain Vac.....	80
	Bale Hauler	81
	Water Pump and Pipe Trailer	82

VALLEYVIEW

RENTAL

EQUIPMENT

Valleyview: 780-524-7621

Crooked Creek: 780-957-2201

Grovedale: 780-512-6239

PICNIC TABLES



DESCRIPTION AND FEATURES

Rental Price: \$10 per table per day, plus GST – Maximum 10 Tables

(Free rental for community/non-profit organizations)

Brand: N/A

Working Width: N/A

Transport Width: N/A

Transportation Speed: N/A

Recommended Vehicle to Tow: N/A

PTO: 540 1000 N/A

HP Requirements: N/A

Motor Driven: Yes No

Hydraulics: N/A

Approximate Equipment Weight:

Hitch Style: N/A

Location: Valleyview

Maximum 3 day rental if there is a line-up.

Equipment must be cleaned before returned. If returned dirty, a cleaning fee will be applied.

BARBEQUE



DESCRIPTION AND FEATURES

Rental Price: \$100/Day plus GST, \$200 Deposit

Brand:

Working Width:

Transport Width:

Transportation Speed:

Recommended Vehicle to Tow: 1/2 ton

PTO: 540 1000 N/A

HP Requirements: N/A

Motor Driven: Yes No

Hydraulics: N/A

Approximate Equipment Weight:

Hitch Style: 2^{5/16}" Ball Hitch

Location: Valleyview (TRL19)

**Free rental for community/non-profit organizations

Maximum 3 day rental if there is a line-up.

Equipment must be cleaned before returned. If returned dirty a cleaning fee will be applied.

FIELD SPRAYER - 500GAL



DESCRIPTION AND FEATURES

Rental Price: \$20/Day plus GST, \$30 Weekend Rate

Brand: MS Gregson

Working Width: 40'

Transport Width: 8'

Transportation Speed: 40 km/hr maximum

Recommended Vehicle to Tow: 1/2 ton

PTO: 540 1000 N/A

HP Requirements: 80 HP

Motor Driven: Yes No

Hydraulics: N/A

Approximate Equipment Weight:

Hitch Style: Draw Pin

Location: Valleyview (ASB0016)

Maximum 3 day rental if there is a line-up.

Equipment must be cleaned before returned. If returned dirty a cleaning fee will be applied.

Additional Notes:

500 gallon sprayer has 40' booms. At 5.5 mph, at 30 psi this unit can cover 70 acres.

BOOMLESS SPRAYER 500GAL



DESCRIPTION AND FEATURES

Rental Price: \$20/Day plus GST, \$30 Weekend Rate

Brand: MS Gregson

Working Width: 30' Coverage

Transport Width: 7'

Transportation Speed: 40 km/h maximum

Recommended Vehicle to Tow: 1/2 ton

PTO: 540 1000 N/A

HP Requirements: N/A

Motor Driven: Yes No

Hydraulics: N/A

Approximate Equipment Weight:

Hitch Style: Draw Pin

Location: Valleyview (ASB0057)

Maximum 3 day rental if there is a line-up.

Equipment must be cleaned before returned. If returned dirty a cleaning fee will be applied.

WATER TANK TRAILER



DESCRIPTION AND FEATURES

Rental Price: \$25/Day plus GST, \$37.50 Weekend Rate

Brand:

Working Width: N/A

Transport Width: N/A

Transportation Speed: Posted highway limits

Recommended Vehicle to Tow: 1/2 ton

PTO: 540 1000 N/A

HP Requirements: N/A

Motor Driven: Yes No

Hydraulics: N/A

Approximate Equipment Weight:

Hitch Style: 2 5/16" Ball Hitch

Location: Valleyview (ASB0081)

NOT FOR USE FOR DRINKING WATER

Maximum 3 day rental if there is a line-up.

Equipment must be cleaned before returned. If returned dirty a cleaning fee will be applied. **Additional Notes:** 1,000 Litre Tank and a 2" Yamaha pump.

ESTATE SPRAYER – PULL TYPE



DESCRIPTION AND FEATURES

Rental Price: \$20/Day plus GST, \$30 Weekend Rate

Brand: Hardi, ES 50

Working Width: N/A

Transport Width: N/A

Transportation Speed: N/A

Recommended Vehicle to Tow: N/A

PTO: 540 1000 N/A

HP Requirements: N/A

Motor Driven: Yes No 12 Volt Pump

Hydraulics: N/A

Approximate Equipment Weight:

Hitch Style: Draw Pin

Location: Valleyview (ASB0059)

50 Gallon Tank

Maximum 3 day rental if there is a line-up.

Equipment must be cleaned before returned. If returned dirty a cleaning fee will be applied.

ESTATE SPRAYER – 3PT HITCH



DESCRIPTION AND FEATURES

Rental Price: \$20/Day plus GST, \$30 Weekend Rate

Brand: Hardi, BNL 50

Working Width: 10' Coverage

Transport Width: Loads into vehicle

Transportation Speed: N/A

Recommended Vehicle to Tow: N/A

PTO: 540 1000 N/A

HP Requirements: 50 HP

Motor Driven: Yes No

Hydraulics: N/A

Approximate Equipment Weight:

Hitch Style: 3pt hitch

Location: Valleyview (ASB0060)

Maximum 3 day rental if there is a line-up.

Equipment must be cleaned before returned. If returned dirty a cleaning fee will be applied.

QUAD MOUNT SPRAYER



DESCRIPTION AND FEATURES

Rental Price: \$10/Day plus GST, \$15 Weekend Rate

Brand: Fimco Industries

Working Width: Up to 20-30' Coverage

Transport Width: N/A

Transportation Speed: N/A

Recommended Vehicle to Tow: N/A

PTO: 540 1000 N/A

HP Requirements: N/A

Motor Driven: Yes No 12 Volt Pump

Hydraulics: N/A

Approximate Equipment Weight: 20 lbs

Hitch Style: N/A

Location: Valleyview (ASB0049)

Maximum 3 day rental if there is a line-up.

Equipment must be cleaned before returned. If returned dirty a cleaning fee will be applied.

BACKPACK SPRAYER



DESCRIPTION AND FEATURES

Rental Price: \$5/Day plus GST, \$7.50 Weekend Rate

Brand: STIHL, SG71

Working Width: N/A

Transport Width: N/A

Transportation Speed: N/A

Recommended Vehicle to Tow: N/A

PTO: 540 1000 N/A

HP Requirements: N/A

Motor Driven: Yes No

Hydraulics: N/A

Approximate Equipment Weight: Under 10 lbs while empty

Hitch Style: N/A

Location: Valleyview (ASB0053)

Maximum 3 day rental if there is a line-up.

Equipment must be cleaned before returned. If returned with herbicide or dirty a cleaning fee will be applied.

GRAIN BAG ROLLER



DESCRIPTION AND FEATURES

Rental Price: \$50/Day plus GST, \$75 Weekend Rate

Brand: Brown Bros Welding

Working Width:

Transport Width: Mounted on a trailer

Transportation Speed: N/A

Recommended Vehicle to Tow: N/A

PTO: 540 1000 N/A

HP Requirements: N/A

Motor Driven: Yes No Gas Motor

Hydraulics: N/A

Approximate Equipment Weight:

Hitch Style: 2" Ball Hitch

Location: Valleyview (ASB0013)

Maximum 3 day rental if there is a line-up.

Equipment must be cleaned before returned. If returned dirty, a cleaning fee will be applied.

MANURE SPREADER



DESCRIPTION AND FEATURES

Rental Price: \$300/Day plus GST, \$450 Weekend Rate

Brand: Bunning, Farmstar 80

Working Width: Approximate 30' Coverage

Transport Width: 103.5"

Transportation Speed: 40 km/h maximum

Recommended Vehicle to Tow: Minimum 1 ton

PTO: 540 1000 N/A

HP Requirements: 130 HP

Motor Driven: Yes No

Hydraulics: 2 pair, Pioneer

Approximate Equipment Weight:

Carrying Capacity: 17,637 lbs

Hitch Style: Draw Pin / Pintle

Location: Valleyview (ASB0010)

Maximum 3 day rental if there is a line-up.

Equipment must be cleaned before returned. If returned dirty a cleaning fee will be applied.

FERTILIZER SPREADER



DESCRIPTION AND FEATURES

Rental Price: \$100/Day plus GST, \$150 Weekend Rate

Brand: Salford Trooper 8.0

Working Width: 60' Coverage

Transport Width: 105"

Transportation Speed: 40km/hr Empty

Recommended Vehicle to Tow: Minimum 3/4 ton

PTO: 540 1000 N/A

HP Requirements: 100 HP

Motor Driven: Yes No

Hydraulics: 1 Pair, Pioneer

Approximate Equipment Weight: 4,600 lbs Empty

Hitch Style: Draw Pin

Location: Valleyview (ASB0085)

Capacity: 9 tonne

Maximum 3 day rental if there is a line-up.

Equipment must be cleaned before returned. If returned dirty a cleaning fee will be applied.

1000 EARTH MOVER



DESCRIPTION AND FEATURES

Rental Price: \$200/Day plus GST, \$300 Weekend Rate

Brand: Leon 1000 A-Series

Working Width: 7'

Transport Width: 94"

Transportation Speed: 40 km/h maximum

Recommended Vehicle to Tow: Minimum 3/4 ton

PTO: 540 1000 N/A

HP Requirements: 150 HP minimum

Motor Driven: Yes No

Hydraulics: 2 pair, Pioneer

Approximate Equipment Weight: 8,000 lbs

Hitch Style: Draw Pin

Location: Valleyview (ASB0041)

Maximum 3 day rental if there is a line-up.

Equipment must be cleaned before returned. If returned dirty a cleaning fee will be applied.

12' PULL TYPE BLADE



DESCRIPTION AND FEATURES

Rental Price: \$50/day plus GST, \$75 weekend rate

Brand: Art's Way Model LS1200S

Working Width: 12'

Transport Width: 9'7"

Transportation Speed: 40 km/hr maximum

Recommended Vehicle to Tow: Minimum 1/2 ton

PTO: 540 1000 N/A

HP Requirements: 60 - 180 HP

Motor Driven: Yes No

Hydraulics: 3 pair, Pioneer

Approximate Equipment Weight: 2890 lbs

Hitch Style:

Location: Valleyview (ASB0027)

Maximum 3 day rental if there is a line-up.

Equipment must be cleaned before returned. If returned dirty a cleaning fee will be applied.

POST POUNDER



DESCRIPTION AND FEATURES

Rental Price: \$125/Day plus GST, 1/2 Date rate \$75, \$187.50 Weekend Rate.

Brand: AGI, Renegade

Working Width: 7.5'

Transport Width: 7.5'

Transportation Speed: 40 km/h maximum

Recommended Vehicle to Tow: 1/2 ton

PTO: 540 1000 NA

HP Requirements: 30 HP

Motor Driven: Yes No **Honda Engine**

Hydraulics: N/A

Approximate Equipment Weight: 2580 lbs/1170 kg

Hitch Style: Draw Pin

Location: Valleyview (ASB0102)

Additional Notes: Maximum post are 8' height and 8" width

Maximum 3 day rental if there is a line-up.

Equipment must be cleaned before returned. If returned dirty a cleaning fee will be applied. ½ day rental available on one day rentals only.

BIN CRANE



DESCRIPTION AND FEATURES

Rental Price: \$100/Day plus GST, \$150 Weekend Rate

Brand: CIM

Working Width: 117"

Transport Width: 117"

Transportation Speed: 40 km/h maximum

Recommended Vehicle to Tow: Minimum 1/2 ton

PTO: 540 1000 N/A

HP Requirements: 100 HP minimum

Motor Driven: Yes No

Hydraulics: 1 Pair, Pioneer

Approximate Equipment Weight: 3,800 lbs

Hitch Style: 2" ball hitch for transportation, draw pin hitch for working

Location: Valleyview (ASB0009)

Maximum 3 day rental if there is a line-up.

Equipment must be cleaned before returned. If returned dirty a cleaning fee will be applied.

CATTLE SQUEEZE



DESCRIPTION AND FEATURES

Rental Price: \$25/Day plus GST, \$37.50 Weekend Rate

Brand: Morand

Working Width: 6'

Transport Width: 6'

Transportation Speed: 40 km/h maximum

Recommended Vehicle to Tow: 1/2 ton

PTO: 540 1000 N/A

HP Requirements: N/A

Motor Driven: Yes No

Hydraulics: N/A

Approximate Equipment Weight:

Hitch Style: 2" ball hitch

Location: Valleyview (ASB0033)

Maximum 3 day rental if there is a line-up.

Equipment must be cleaned before returned. If returned dirty a cleaning fee will be applied.

LOADING CHUTE



DESCRIPTION AND FEATURES

Rental Price: \$50/Day plus GST, \$75 Weekend Rate

Brand: Morand

Working Width: 67"

Transport Width: 67"

Transportation Speed: 40 km/h maximum

Recommended Vehicle to Tow: 1/2 ton

PTO: 540 1000 N/A

HP Requirements: N/A

Motor Driven: Yes No

Hydraulics: N/A

Approximate Equipment Weight: 2,200 lbs

Hitch Style: Draw pin or 2" ball hitch - please check with the attendant when booking rental

Location: Valleyview (ASB0022)

Maximum 3 day rental if there is a line-up.

Equipment must be cleaned before returned. If returned dirty a cleaning fee will be applied.

PANEL TRAILER



DESCRIPTION AND FEATURES

Rental Price: \$50/Day plus GST, \$75 Weekend Rate

Brand: Snake River/Morand – Valleyview

Working Width: N/A

Transport Width: N/A

Transportation Speed: Posted Limits

Recommended Vehicle to Tow: 1/2 ton

PTO: 540 1000 N/A

HP Requirements: N/A

Motor Driven: Yes No

Hydraulics: N/A

Approximate Equipment Weight:

Hitch Style: 2 ⁵/₁₆"

Location: Valleyview (ASB0034)

Maximum 3 day rental if there is a line-up.

Equipment must be cleaned before returned. If returned dirty, a cleaning fee will be applied.

TAG READER



DESCRIPTION AND FEATURES

Rental Price: No Charge

Brand: Gallagher – HR5 v2

Working Width: N/A

Transport Width: N/A

Transportation Speed: N/A

Recommended Vehicle to Tow: N/A

PTO: 540 1000 N/A

HP Requirements: N/A

Motor Driven: Yes No

Hydraulics: N/A

Approximate Equipment Weight: Under 10 lbs

Hitch Style: N/A

Location: Valleyview (ASB0065)

Note: Battery must be charged before use.

Maximum 3 day rental if there is a line-up.

Equipment must be cleaned before returned. If returned dirty a cleaning fee will be applied.

50' HEAVY HARROW WITH VALMAR



DESCRIPTION AND FEATURES

Rental Price: \$250/day plus GST, \$375 Weekend Rate

Brand: 2024 Brandt 550A 50' 5 Bar Torsion Harrow

Working Width: 50'

Transport Width: 13'

Transportation Speed: 40 km/h maximum

Recommended Vehicle to Tow: Minimum 1 ton

PTO: 540 1000 N/A

HP Requirements: 150 HP minimum

Motor Driven: Yes No

Hydraulics: 3 pair, Pioneer

Approximate Equipment Weight: 10,555 lbs

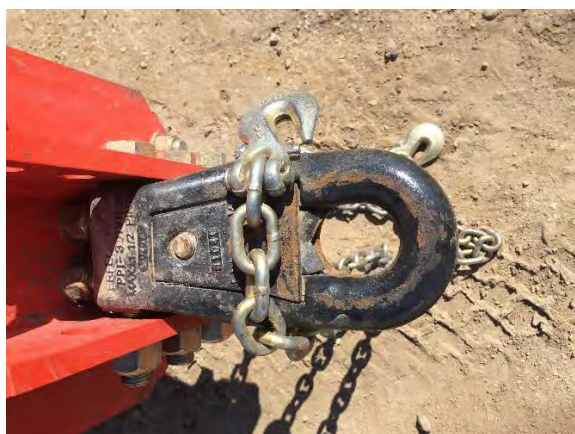
Hitch Style: Draw Pin

Location: Valleyview (ASB0105)

Maximum 3 day rental if there is a line-up.

Equipment must be cleaned before returned. If returned dirty a cleaning fee will be applied.

30' LAND ROLLER



DESCRIPTION AND FEATURES

Rental Price: \$200/day plus GST, \$300 Weekend Rate

Brand: Riteway

Working Width: 30'

Transport Width: 13'6"

Transportation Speed: 40 km/h maximum

Recommended Vehicle to Tow: F550

PTO: 540 1000 N/A

HP Requirements: 130 HP minimum

Motor Driven: Yes No

Hydraulics: 2 pair, Pioneer

Approximate Equipment Weight: 17,640 lbs

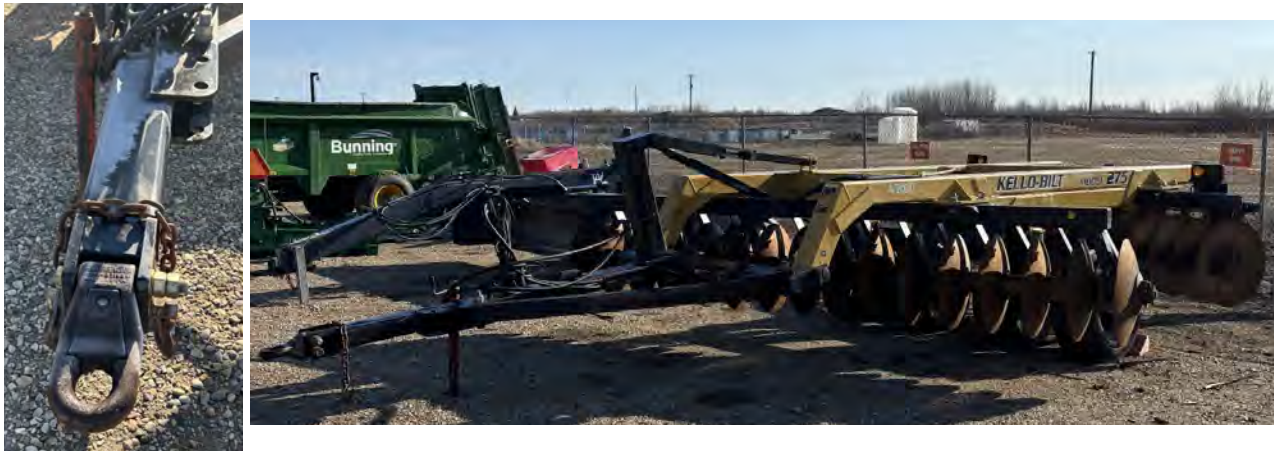
Hitch Style: Unit has single clevis draw pin. Double clevis/ Pintle hitch required for transport.

Location: Valleyview (ASB0005)

Maximum 3 day rental if there is a line-up.

Equipment must be cleaned before returned. If returned dirty a cleaning fee will be applied.

14' HEAVY DISC



DESCRIPTION AND FEATURES

Rental Price: \$300/day plus GST, \$450 weekend rate

Brand: 2022 Kello-Bilt

Working Width: 14'

Transport Width: 14'

Transportation Speed: 40 km/hr maximum

Recommended Vehicle to Tow: F550

PTO: 540 1000 N/A

HP Requirements: 150 HP minimum

Motor Driven: Yes No

Hydraulics: 2 Pairs

Approximate Equipment Weight: 13,830 lbs

Hitch Style: draw pin – **double clevis required**

Location: Valleyview (ASB0087)

Maximum 3 day rental if there is a line-up.

Equipment must be cleaned before returned. If returned dirty a cleaning fee will be applied.

NO TILL SEED DRILL



DESCRIPTION AND FEATURES

Rental Price: \$200/Day plus GST, \$300 Weekend Rate

Brand: John Deere 1590

Working Width: 15' 1/2" Wide

Transport Width: 15' 1/2" Wide

Transportation Speed: N/A

Recommended Vehicle to Tow: 1 ton

PTO: 540 1000 N/A

HP Requirements: 100 HP

Motor Driven: Yes No

Hydraulics: 2 Pair Pioneer

Approximate Equipment Weight: Empty 10,670 lbs

Hitch Style: Pin Hitch

Location: Valleyview (ASB0011)

Maximum 3 day rental if there is a line-up.

Equipment must be cleaned before returned. If returned dirty, a cleaning fee will be applied.

- Notes:**
- 10" Spacing
 - 2 Large grain/fertilizer boxes
 - 1 Small seed box

CONSERVATION SEEDER - 3-PT HITCH



DESCRIPTION AND FEATURES

Rental Price: \$100/day plus GST, \$150 Weekend Rate

Brand: Frontier GS1184

Working Width: 49.25"

Transport Width: 61.25"

Transportation Speed:

Recommended Vehicle to Tow: Tractor or trailer

PTO: 540 1000 N/A

HP Requirements: 55 HP minimum

Motor Driven: Yes No

Hydraulics:

Approximate Equipment Weight:

Hitch Style: 3pt Hitch

Location: Valleyview (ASB0067)

Maximum 3 day rental if there is a line-up.

Equipment must be cleaned before returned. If returned dirty a cleaning fee will be applied.

3-PT HITCH - 8' ROTARY TILLER



DESCRIPTION AND FEATURES

Rental Price: \$150/day plus GST, \$225 Weekend Rate

Brand: Frontier RT2293

Working Width: 8'

Transport Width: 8'

Transportation Speed: N/A

Recommended Vehicle to Tow: Tractor or trailer

PTO: 540 1000 N/A

HP Requirements: 60 – 100 HP

Motor Driven: Yes No

Hydraulics: Yes

Approximate Equipment Weight: 11,562 lbs

Hitch Style: 3pt hitch

Location: Valleyview (ASB0031)

Maximum 3 day rental if there is a line-up.

Equipment must be cleaned before returned. If returned dirty a cleaning fee will be applied.

3-PT HITCH – 8' DEEP TILLAGE CULTIVATOR (CHISEL PLOW)



DESCRIPTION AND FEATURES

Rental Price: \$100/day plus GST, \$150 Weekend Rate

Brand: John Deere 610

Working Width: 8'

Transport Width: 10'

Transportation Speed: N/A

Recommended Vehicle to Tow: Tractor or trailer

PTO: 540 1000 N/A

HP Requirements: 80 HP

Motor Driven: Yes No

Hydraulics: N/A

Approximate Equipment Weight:

Hitch Style: 3pt hitch

Location: Valleyview (ASB0086)

Maximum 3 day rental if there is a line-up.

Equipment must be cleaned before returned. If returned dirty a cleaning fee will be applied.

3-PT HITCH - DISC



DESCRIPTION AND FEATURES

Rental Price: \$100/day plus GST, \$150 Weekend Rate

Brand: Frontier DH1396

Working Width: 8'

Transport Width: 8'

Transportation Speed: N/A

Recommended Vehicle to Tow: Tractor or trailer

PTO: 540 1000 N/A

HP Requirements: 50 HP

Motor Driven: Yes No

Hydraulics: N/A

Approximate Equipment Weight: 1,110 LBS

Hitch Style: 3pt hitch

Location: Valleyview (ASB0030)

Maximum 3 day rental if there is a line-up.

Equipment must be cleaned before returned. If returned dirty a cleaning fee will be applied.

3-PT HITCH - HARROW



DESCRIPTION AND FEATURES

Rental Price: \$50/day plus GST , \$75 Weekend Rate

Brand: Tram

Working Width: 8'

Transport Width: 8'

Transportation Speed: N/A

Recommended Vehicle to Tow: Tractor or trailer

PTO: 540 1000 N/A

HP Requirements: 40 HP

Motor Driven: Yes No

Hydraulics: N/A

Approximate Equipment Weight:

Hitch Style: 3pt hitch

Location: Valleyview (ASB0032)

Maximum 3 day rental if there is a line-up.

Equipment must be cleaned before returned. If returned dirty a cleaning fee will be applied.

3-PT HITCH - 8' PULL BLADE



DESCRIPTION AND FEATURES

Rental Price: \$25/day plus GST, \$37.50 Weekend Rate

Brand: Frontier RB2296

Working Width: 8'

Transport Width: 8'

Transportation Speed: N/A

Recommended Vehicle to Tow: Tractor or trailer

PTO: 540 1000 N/A

HP Requirements: 2WD 80 HP / 4WD 70 HP

Motor Driven: Yes No

Hydraulics: One way

Approximate Equipment Weight: 772 lbs

Hitch Style: 3pt hitch

Location: Valleyview (ASB0029)

Maximum 3 day rental if there is a line-up.

Equipment must be cleaned before returned. If returned dirty a cleaning fee will be applied.

PLASTIC MULCH APPLICATOR



DESCRIPTION AND FEATURES

Rental Price: \$50/day plus GST, \$75 Weekend Rate

Brand: Rain-Flo 2370

Working Width:

Transport Width:

Transportation Speed:

Recommended Vehicle to Tow: Tractor or trailer

PTO: 540 1000 N/A

HP Requirements: 30 HP

Motor Driven: Yes No

Hydraulics:

Approximate Equipment Weight: 1100 lbs

Hitch Style: 3pt Hitch

Location: Valleyview (ASB0093)

Maximum 3 day rental if there is a line-up.

Equipment must be cleaned before returned. If returned dirty a cleaning fee will be applied.

TREE PLANTER



DESCRIPTION AND FEATURES

Rental Price: \$50/day plus GST, \$75 Weekend Rate

Brand: Rain-Flo 1270

Working Width:

Transport Width:

Transportation Speed:

Recommended Vehicle to Tow: Tractor or trailer

PTO: 540 1000 N/A

HP Requirements: 40 - 60 HP

Motor Driven: Yes No

Hydraulics:

Approximate Equipment Weight: 800 lbs

Hitch Style: 3pt Hitch

Location: Valleyview (ASB0094)

Maximum 3 day rental if there is a line-up.

Equipment must be cleaned before returned. If returned dirty a cleaning fee will be applied.

TRUCK MOUNT SEEDER



DESCRIPTION AND FEATURES

Rental Price: \$10/day plus GST, \$15 Weekend Rate

Brand: TurfEx, TS300

Working Width: up to 20' spreading width

Transport Width: 30"

Transportation Speed: N/A

Recommended Vehicle to Tow: N/A

PTO: 540 1000 N/A

HP Requirements: N/A

Motor Driven: Yes No 12 Volt Motor

Hydraulics: N/A

Approximate Equipment Weight: 65 lbs

Hitch Style: Fits into 2" Hitch Receiver

Location: Valleyview (ASB0098)

3.0 cu ft capacity.

Maximum 3 day rental if there is a line-up.

Equipment must be cleaned before returned. If returned dirty a cleaning fee will be applied.

QUAD MOUNT SEEDER



DESCRIPTION AND FEATURES

Rental Price: \$10/Day plus GST, \$15 Weekend Rate

Brand: Worksaver

Working Width: N/A

Transport Width: N/A

Transportation Speed: N/A

Recommended Vehicle to Tow: N/A

PTO: 540 1000 N/A

HP Requirements: N/A

Motor Driven: Yes No 12 Volt Motor

Hydraulics: N/A

Approximate Equipment Weight: Under 50 lbs

Hitch Style: N/A

Location: Valleyview (ASB0074)

Maximum 3 day rental if there is a line-up.

Equipment must be cleaned before returned. If returned dirty a cleaning fee will be applied.

HAND SEEDER



DESCRIPTION AND FEATURES

Rental Price: Free first 3 days (\$5.00 + GST each additional day)

Brand: Earthway, 2750

Working Width:

Transport Width: Loads into vehicle

Transportation Speed: N/A

Recommended Vehicle to Tow: N/A

PTO: 540 1000 N/A

HP Requirements: N/A

Motor Driven: Yes No

Hydraulics: N/A

Approximate Equipment Weight: Under 10 lbs

Hitch Style: N/A

Location: Valleyview (ASB0099)

Hopper capacity of 20lbs.

Maximum 3 day rental if there is a line-up.

Equipment must be cleaned before returned. If returned dirty, a cleaning fee will be applied.

BROADCAST SEEDER - 3-PT HITCH



DESCRIPTION AND FEATURES

Rental Price: \$15/Day plus GST, \$22.50 Weekend Rate

Brand: Frontier

Working Width: *Depends on seed type (see notes)

Transport Width: 42"

Transportation Speed: N/A

Recommended Vehicle to Tow: N/A

PTO: 540 1000 NA

HP Requirements: N/A

Motor Driven: Yes No

Hydraulics: N/A

Approximate Equipment Weight: 125 lbs

Hitch Style: N/A

Location: Valleyview (ASB0077)

Maximum 3 day rental if there is a line-up.

Equipment must be cleaned before returned. If returned dirty a cleaning fee will be applied.

Additional Notes: Oats (28'), Brome (10') Fescue & Ryegrass (18')

Note:

Hopper capacity: 678 lbs or 307.5 kg

METAL DETECTOR



DESCRIPTION AND FEATURES

Rental Price: \$10/Day plus GST, \$15 Weekend Rate

Brand: Schonstedt SPOT Pin Locator

Working Width: N/A

Transport Width: N/A

Transportation Speed: N/A

Recommended Vehicle to Tow: N/A

PTO: 540 1000 N/A

HP Requirements: N/A

Motor Driven: Yes No

Hydraulics: N/A

Approximate Equipment Weight: Under 10 lbs

Hitch Style: N/A

Location: Valleyview (ASB0097)

Maximum 3 day rental if there is a line-up.

Equipment must be cleaned before returned. If returned dirty a cleaning fee will be applied.

MEASURING WHEEL, BIN PROBE & SOIL SAMPLER



DESCRIPTION AND FEATURES

Rental Price: Free first 3 days (\$5.00 + GST each additional day), \$7.50 Weekend Rate

Brand:

Working Width: N/A

Transport Width: N/A

Transportation Speed: N/A

Recommended Vehicle to Tow: N/A

PTO: 540 1000 NA

HP Requirements: N/A

Motor Driven: Yes No

Hydraulics: N/A

Approximate Equipment Weight: Under 10 lbs

Hitch Style: N/A

Location: Valleyview: Measuring Wheel (ASB0072), Bin Probe (ASB0069) & Soil Sampler (ASB0078)

Maximum 3 day rental if there is a line-up.

Equipment must be cleaned before returned. If returned dirty a cleaning fee will be applied.

HAY SAMPLER



DESCRIPTION AND FEATURES

Rental Price: Free first 3 days (\$5.00 + GST each additional day), \$7.50 Weekend Rate

Brand: Working Width: N/A

Transport Width: N/A

Transportation Speed: N/A

Recommended Vehicle to Tow: N/A

PTO: 540 1000 NA

HP Requirements: N/A

Motor Driven: Yes No

Hydraulics: N/A

Approximate Equipment Weight: Under 10 lbs

Hitch Style: N/A

Location: Valleyview (ASB0071)

Maximum 3 day rental if there is a line-up.

Equipment must be cleaned before returned. If returned dirty a cleaning fee will be applied.

SCARE CANNONS



DESCRIPTION AND FEATURES

Rental Price: Free first 3 days (\$5.00 + GST each additional day), \$7.50 Weekend Rate

Brand:

Working Width: N/A

Transport Width: N/A

Transportation Speed: N/A

Recommended Vehicle to Tow: N/A

PTO: 540 1000 N/A

HP Requirements: N/A

Motor Driven: Yes No Propane powered (not included)

Hydraulics: N/A

Approximate Equipment Weight: Under 10 lbs

Hitch Style: N/A

Location: Valleyview (ASB0088 - ASB0092)

Maximum 3 day rental if there is a line-up.

Equipment must be cleaned before returned. If returned dirty a cleaning fee will be applied.

SMALL ANIMAL TRAPS



DESCRIPTION AND FEATURES

Rental Price: \$2/Day plus GST, \$3 Weekend Rate

Brand:

Working Width: N/A

Transport Width: N/A

Transportation Speed: N/A

Recommended Vehicle to Tow: N/A

PTO: 540 1000 N/A

HP Requirements: N/A

Motor Driven: Yes No

Hydraulics: N/A

Approximate Equipment Weight: Under 10 lbs

Hitch Style: N/A

Location: Valleyview (ASB0075)

Maximum 3 day rental if there is a line-up.

Equipment must be cleaned before returned. If returned dirty a cleaning fee will be applied.

GRAIN VAC



DESCRIPTION AND FEATURES

Rental Price: \$150/Day plus GST. \$75 ½ Day Rate, \$225 Weekend Rate

Brand: REM

Working Width: N/A

Transport Width: 98^{3/16}"

Transportation Speed: 40 km/hr maximum

Recommended Vehicle to Tow: 1/2 ton

PTO: 540 1000 N/A

HP Requirements: Tractor -100 HP for cleanup, or 85 HP for full bin load-out

Motor Driven: Yes No

Hydraulics: 1 pair, pioneer

Approximate Equipment Weight: 2,950 lbs

Hitch Style: Pintle

Location: Valleyview (ASB0028)

Maximum 3 day rental if there is a line-up.

Equipment must be cleaned before returned. If returned dirty a cleaning fee will be applied.

BALE HAULER



DESCRIPTION AND FEATURES

Rental Price: \$250/Day plus GST, \$375 Weekend Rate

Brand: 2022 Anderson RBM 1400

Working Width: 18'2"

Transport Width: 8'4"

Transportation Speed: 40 km/h maximum

Recommended Vehicle to Tow: Minimum 1 ton

PTO: 540 1000 N/A

HP Requirements: 115 HP minimum

Motor Driven: Yes No

Hydraulics: 3 dual-effect hydraulic control systems

Approximate Equipment Weight: **Unloaded:** 12,566 lbs **Loaded:** 41,888 lbs

Hitch Style: Double Clevis

Location: Valleyview (ASB0026)

Maximum 3 day rental if there is a line-up.

Equipment must be cleaned before returned. If returned dirty a cleaning fee will be applied.

PRESSURE WASHER



DESCRIPTION AND FEATURES

Rental Price: \$50/Day plus GST, \$75 Weekend Rate

Brand: Hotsy

Working Width:

Transport Width:

Transportation Speed: Posted highway limits

Recommended Vehicle to Tow: 1/2 ton

PTO: 540 1000 NA

HP Requirements: N/A

Motor Driven: Yes No

Hydraulics: N/A

Approximate Equipment Weight:

Hitch Style: 2 5/16" Ball Hitch

Location: Valleyview (TRL 31)

Additional Notes: 220 Litre tank

Unit is unavailable for rent during the winter months

Maximum 3 day rental if there is a line-up.

Equipment must be cleaned before returned. If returned dirty a cleaning fee will be applied.

WATER PUMP AND PIPE TRAILER



DESCRIPTION AND FEATURES

Rental Price: \$250 first 48 hrs, then \$250.00 each additional 24 hrs plus GST (April 2 - Oct 31)*

Brand:

Working Width:

Transport Width:

Transportation Speed: 40 km/h Maximum

Recommended Vehicle to Tow: F550

PTO: 540 1000 NA

HP Requirements: 80 HP for pump, 100 HP to pull unit

Motor Driven: Yes No

Hydraulics: N/A

Pipe: Approximate 1 mile

Approximate Equipment Weight: 15,000 lbs (Trailer)

Hitch Style: Draw Pin

Location: Valleyview (ASB0039)

Maximum 3 day rental if there is a line-up.

Equipment must be cleaned before returned. If returned dirty a cleaning fee will be applied.

***Off season rates at Managers Discretion:** \$500 first 48 hrs, then \$500.00 each additional 24 hrs plus GST (Nov 1 - April 1)

CROOKED CREEK

RENTAL

EQUIPMENT

Crooked Creek: 780-957-2201

Valleyview: 780-524-7621

Grovedale: 780-512-6239

FIELD SPRAYER - 300GAL



DESCRIPTION AND FEATURES

Rental Price: \$50/Day plus GST

Brand: MS Gregson

Working Width: 40'

Transport Width: 8'

Transportation Speed: 40 km/hr maximum

Recommended Vehicle to Tow: 1/2 ton

PTO: 540 1000 NA

HP Requirements: 80 HP

Motor Driven: Yes No

Hydraulics: N/A

Approximate Equipment Weight:

Hitch Style: Draw Pin

Location: Crooked Creek (ASB0056)

Maximum 3 day rental if there is a line-up.

Equipment must be cleaned before returned. If returned dirty a cleaning fee will be applied.

Additional Notes:

300 gallon sprayer has 35' booms. At 5.5 mph, at 30 psi this unit can cover 44 acres.

ESTATE SPRAYER – PULL TYPE



DESCRIPTION AND FEATURES

Rental Price: \$20/Day plus GST, \$30 Weekend Rate

Brand: Hardi, ES 30

Working Width: N/A

Transport Width: N/A

Transportation Speed: N/A

Recommended Vehicle to Tow: N/A

PTO: 540 1000 N/A

HP Requirements: N/A

Motor Driven: Yes No 12 Volt Pump

Hydraulics: N/A

Approximate Equipment Weight:

Hitch Style: Draw Pin

Location: Crooked Creek (ASB0058)

30 Gallon Tank

Maximum 3 day rental if there is a line-up.

Equipment must be cleaned before returned. If returned dirty a cleaning fee will be applied.

QUAD MOUNT SPRAYER



DESCRIPTION AND FEATURES

Rental Price: \$10/Day plus GST, \$15 Weekend Rate

Brand: Fimco Industries

Working Width: Up to 20-30' Coverage

Transport Width: N/A

Transportation Speed: N/A

Recommended Vehicle to Tow: N/A

PTO: 540 1000 N/A

HP Requirements: N/A

Motor Driven: Yes No 12 Volt Pump

Hydraulics: N/A

Approximate Equipment Weight: 20 lbs

Hitch Style: N/A

Location: Crooked Creek (ASB0050)

Maximum 3 day rental if there is a line-up.

Equipment must be cleaned before returned. If returned dirty a cleaning fee will be applied.

BACKPACK SPRAYER



DESCRIPTION AND FEATURES

Rental Price: \$5/Day plus GST, \$7.50 Weekend Rate

Brand: STIHL, SG71

Working Width: N/A

Transport Width: N/A

Transportation Speed: N/A

Recommended Vehicle to Tow: N/A

PTO: 540 1000 N/A

HP Requirements: N/A

Motor Driven: Yes No

Hydraulics: N/A

Approximate Equipment Weight: Under 10 lbs while empty

Hitch Style: N/A

Location: Crooked Creek (ASB0054)

Maximum 3 day rental if there is a line-up.

Equipment must be cleaned before returned. If returned with herbicide or dirty a cleaning fee will be applied.

1000 EARTH MOVER



DESCRIPTION AND FEATURES

Rental Price: \$200/Day plus GST, \$300 Weekend Rate

Brand: Leon 1000 A-Series

Working Width: 7'

Transport Width: 94"

Transportation Speed: 40 km/h maximum

Recommended Vehicle to Tow: Minimum 3/4 ton

PTO: 540 1000 N/A

HP Requirements: 150 HP minimum

Motor Driven: Yes No

Hydraulics: 2 pair, Pioneer

Approximate Equipment Weight: 8,000 lbs

Hitch Style: Draw Pin

Location: Crooked Creek (ASB0042)

Maximum 3 day rental if there is a line-up.

Equipment must be cleaned before returned. If returned dirty a cleaning fee will be applied.

POST POUNDER



DESCRIPTION AND FEATURES

Rental Price: \$125/Day plus GST, 1/2 Day rate \$75, \$187.50 Weekend Rate.

Brand: AGI, Renegade

Working Width: 7.5'

Transport Width: 7.5'

Transportation Speed: 40 km/h maximum

Recommended Vehicle to Tow: 1/2 ton

PTO: 540 1000 NA

HP Requirements: 30 HP

Motor Driven: Yes No **Honda Engine**

Hydraulics: N/A

Approximate Equipment Weight: 2580 lbs/1170 kg

Hitch Style: Draw Pin

Location: Crooked Creek (ASB107)

Additional Notes: Maximum post are 8' height and 8" width

Maximum 3 day rental if there is a line-up.

Equipment must be cleaned before returned. If returned dirty a cleaning fee will be applied. ½ day rental available on one day rentals only.

CATTLE SQUEEZE



DESCRIPTION AND FEATURES

Rental Price: \$25/Day plus GST, \$37.50 Weekend Rate

Brand: Morand

Working Width: 6'

Transport Width: 6'

Transportation Speed: 40 km/h maximum

Recommended Vehicle to Tow: 1/2 ton

PTO: 540 1000 N/A

HP Requirements: N/A

Motor Driven: Yes No

Hydraulics: N/A

Approximate Equipment Weight:

Hitch Style: 2" ball hitch

Location: Crooked Creek (ASB0020)

Maximum 3 day rental if there is a line-up.

Equipment must be cleaned before returned. If returned dirty a cleaning fee will be applied.

LOADING CHUTE



DESCRIPTION AND FEATURES

Rental Price: \$50/Day plus GST, \$75 Weekend Rate

Brand: Morand

Working Width: 67"

Transport Width: 67"

Transportation Speed: 40 km/h maximum

Recommended Vehicle to Tow: 1/2 ton

PTO: 540 1000 N/A

HP Requirements: N/A

Motor Driven: Yes No

Hydraulics: N/A

Approximate Equipment Weight: 2,200 lbs

Hitch Style: Draw pin or 2" ball hitch - please check with the attendant when booking rental

Location: Crooked Creek (ASB0021)

Maximum 3 day rental if there is a line-up.

Equipment must be cleaned before returned. If returned dirty a cleaning fee will be applied.

GROVEDALE

RENTAL

EQUIPMENT

Grovedale: 780-512-6239

Valleyview: 780-524-7621

Crooked Creek: 780-957-2201

FIELD SPRAYER - 500GAL



DESCRIPTION AND FEATURES

Rental Price: \$20/Day plus GST, \$30 Weekend Rate

Brand: MS Gregson

Working Width: 40'

Transport Width: 8'

Transportation Speed: 40 km/hr maximum

Recommended Vehicle to Tow: 1/2 ton

PTO: 540 1000 N/A

HP Requirements: 80 HP

Motor Driven: Yes No

Hydraulics: N/A

Approximate Equipment Weight:

Hitch Style: Draw Pin

Location: Grovedale (ASB0015)

Maximum 3 day rental if there is a line-up.

Equipment must be cleaned before returned. If returned dirty a cleaning fee will be applied.

Additional Notes:

500 gallon sprayer has 40' booms. At 5.5 mph, at 30 psi this unit can cover 70 acres.

BOOMLESS SPRAYER 300GAL



DESCRIPTION AND FEATURES

Rental Price: \$20/Day plus GST

Brand: MS Gregson

Working Width: 30' Coverage

Transport Width: 7'

Transportation Speed: 40 km/h maximum

Recommended Vehicle to Tow: 1/2 ton

PTO: 540 1000 N/A

HP Requirements: N/A

Motor Driven: Yes No

Hydraulics: N/A

Approximate Equipment Weight:

Hitch Style: Draw Pin

Location: Grovedale

Maximum 3 day rental if there is a line-up.

Equipment must be cleaned before returned. If returned dirty a cleaning fee will be applied.

WATER TANK TRAILER



DESCRIPTION AND FEATURES

Rental Price: \$25/Day plus GST, \$37.50 Weekend Rate

Brand:

Working Width: N/A

Transport Width: N/A

Transportation Speed: Posted highway limits

Recommended Vehicle to Tow: 1/2 ton

PTO: 540 1000 N/A

HP Requirements: N/A

Motor Driven: Yes No

Hydraulics: N/A

Approximate Equipment Weight:

Hitch Style: 2 5/16" Ball Hitch

Location: Grovedale (ASB0084)

NOT FOR USE FOR DRINKING WATER

Maximum 3 day rental if there is a line-up.

Equipment must be cleaned before returned. If returned dirty a cleaning fee will be applied. **Additional Notes:** 1,000 Litre Tank and a 2" Yamaha pump.

QUAD MOUNT SPRAYER



DESCRIPTION AND FEATURES

Rental Price: \$10/Day plus GST, \$15 Weekend Rate

Brand: Fimco Industries

Working Width: Up to 20-30' Coverage

Transport Width: N/A

Transportation Speed: N/A

Recommended Vehicle to Tow: N/A

PTO: 540 1000 N/A

HP Requirements: N/A

Motor Driven: Yes No 12 Volt Pump

Hydraulics: N/A

Approximate Equipment Weight: 20 lbs

Hitch Style: N/A

Location: Grovedale (ASB0051)

Maximum 3 day rental if there is a line-up.

Equipment must be cleaned before returned. If returned dirty a cleaning fee will be applied.

BACKPACK SPRAYER



DESCRIPTION AND FEATURES

Rental Price: \$5/Day plus GST, \$7.50 Weekend Rate

Brand: STIHL, SG71

Working Width: N/A

Transport Width: N/A

Transportation Speed: N/A

Recommended Vehicle to Tow: N/A

PTO: 540 1000 N/A

HP Requirements: N/A

Motor Driven: Yes No

Hydraulics: N/A

Approximate Equipment Weight: Under 10 lbs while empty

Hitch Style: N/A

Location: Grovedale (ASB0055)

Maximum 3 day rental if there is a line-up.

Equipment must be cleaned before returned. If returned with herbicide or dirty a cleaning fee will be applied.

MANURE SPREADER



DESCRIPTION AND FEATURES

Rental Price: \$300/Day plus GST, \$450 Weekend Rate

Brand: Bunning, Lowlander

Working Width: Approximate 30' Coverage

Transport Width: 103.5"

Transportation Speed: 40 km/h maximum

Recommended Vehicle to Tow: Minimum 1 ton

PTO: 540 1000 N/A

HP Requirements: 130 HP

Motor Driven: Yes No

Hydraulics: 2 pair, Pioneer

Approximate Equipment Weight:

Carrying Capacity: 18,734 lbs

Hitch Style: Draw Pin / Pintle

Location: Grovedale (ASB0045)

Maximum 3 day rental if there is a line-up.

Equipment must be cleaned before returned. If returned dirty a cleaning fee will be applied.

FERTILIZER SPREADER



DESCRIPTION AND FEATURES

Rental Price: \$100/Day plus GST, \$150 Weekend Rate

Brand: Wilmar, WS 800

Working Width: 30' Coverage

Transport Width: 92"

Transportation Speed: 40km/hr Empty

Recommended Vehicle to Tow: Minimum 3/4 ton

PTO: 540 1000 N/A

HP Requirements: 100 HP

Motor Driven: Yes No

Hydraulics: 1 Pair, Pioneer

Approximate Equipment Weight: 3,400 lbs Empty

Hitch Style: Draw Pin

Location: Grovedale (ASB0064)

Capacity: 6 tonne

Maximum 3 day rental if there is a line-up.

Equipment must be cleaned before returned. If returned dirty a cleaning fee will be applied.

1000 EARTH MOVER



DESCRIPTION AND FEATURES

Rental Price: \$200/Day plus GST, \$300 Weekend Rate

Brand: Leon 1000 A-Series

Working Width: 7'

Transport Width: 94"

Transportation Speed: 40 km/h maximum

Recommended Vehicle to Tow: Minimum 3/4 ton

PTO: 540 1000 N/A

HP Requirements: 150 HP minimum

Motor Driven: Yes No

Hydraulics: 2 pair, Pioneer

Approximate Equipment Weight: 8,000 lbs

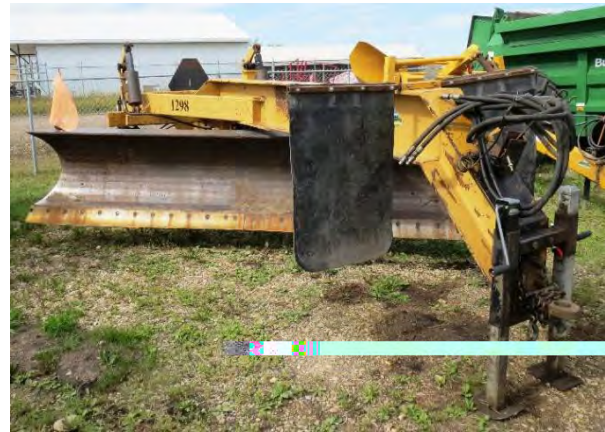
Hitch Style: Draw Pin

Location: Grovedale (ASB0019)

Maximum 3 day rental if there is a line-up.

Equipment must be cleaned before returned. If returned dirty a cleaning fee will be applied.

12' PULL TYPE BLADE



DESCRIPTION AND FEATURES

Rental Price: \$50/day plus GST, \$75 Weekend Rate

Brand: Assie Industries Model 1298

Working Width: 12'

Transport Width: 10.5'

Transportation Speed: 40 km/hr maximum

Recommended Vehicle to Tow: Minimum 1/2 ton

PTO: 540 1000 N/A

HP Requirements: 100 HP minimum

Motor Driven: Yes No

Hydraulics: 3 pair, Pioneer

Approximate Equipment Weight: 4500 lbs

Hitch Style: Unit has single clevis draw pin – **double clevis required for transport** **Location:**

Location: Grovedale (ASB0048)

Maximum 3 day rental if there is a line-up.

Equipment must be cleaned before returned. If returned dirty a cleaning fee will be applied.

VEE DITCHER



DESCRIPTION AND FEATURES

Rental Price: \$50/Day plus GST, \$75 Weekend Rate

Brand: Univision

Working Width: 6.5'

Transport Width: 9'

Transportation Speed: 40 km/hr Maximum

Recommended Vehicle to Tow: 1/2 ton

PTO: 540 1000 N/A

HP Requirements: 130 HP

Motor Driven: Yes No

Hydraulics: 1 pair, Pioneer

Approximate Equipment Weight: 2,100 lbs

Hitch Style: Draw Pin

Location: Grovedale (ASB0062)

Maximum 3 day rental if there is a line-up.

Equipment must be cleaned before returned. If returned dirty a cleaning fee will be applied.

POST POUNDER



DESCRIPTION AND FEATURES

Rental Price: \$125/Day plus GST, 1/2 Date rate \$75, \$187.50 Weekend Rate. **Brand:**

AGI, Renegade

Working Width: 7.5'

Transport Width: 7.5'

Transportation Speed: 40 km/h maximum

Recommended Vehicle to Tow: 1/2 ton

PTO: 540 1000 NA

HP Requirements: 30 HP

Motor Driven: Yes No **Honda Engine**

Hydraulics: N/A

Approximate Equipment Weight: 2580 lbs/1170 kg

Hitch Style: Draw Pin

Location: Grovedale (ASB0108)

Additional Notes: Maximum post are 8' height and 8" width

Maximum 3 day rental if there is a line-up.

Equipment must be cleaned before returned. If returned dirty a cleaning fee will be applied. ½ day rental available on one day rentals only.

BIN CRANE



DESCRIPTION AND FEATURES

Rental Price: \$100/Day plus GST, \$150 Weekend Rate

Brand: Westeel

Working Width: 117"

Transport Width: 117"

Transportation Speed: 40 km/h maximum

Recommended Vehicle to Tow: Minimum 1/2 ton

PTO: 540 1000 N/A

HP Requirements: 100 HP minimum

Motor Driven: Yes No

Hydraulics: 1 Pair, Pioneer

Approximate Equipment Weight: 3,800 lbs

Hitch Style: 2" ball hitch for transportation, draw pin hitch for working

Location: Grovedale (ASB0036)

Maximum 3 day rental if there is a line-up.

Equipment must be cleaned before returned. If returned dirty a cleaning fee will be applied.

CATTLE SQUEEZE



DESCRIPTION AND FEATURES

Rental Price: \$25/Day plus GST, \$37.50 Weekend Rate

Brand: Morand

Working Width: 6'

Transport Width: 6'

Transportation Speed: 40 km/h maximum

Recommended Vehicle to Tow: 1/2 ton

PTO: 540 1000 N/A

HP Requirements: N/A

Motor Driven: Yes No

Hydraulics: N/A

Approximate Equipment Weight:

Hitch Style: 2" ball hitch

Location: Grovedale (ASB0037)

Maximum 3 day rental if there is a line-up.

Equipment must be cleaned before returned. If returned dirty a cleaning fee will be applied.

LOADING CHUTE



DESCRIPTION AND FEATURES

Rental Price: \$50/Day plus GST, \$75 Weekend Rate

Brand: Morand

Working Width: 67"

Transport Width: 67"

Transportation Speed: 40 km/h maximum

Recommended Vehicle to Tow: 1/2 ton

PTO: 540 1000 N/A

HP Requirements: N/A

Motor Driven: Yes No

Hydraulics: N/A

Approximate Equipment Weight: 2,200 lbs

Hitch Style: Draw pin or 2" ball hitch - please check with the attendant when booking rental

Location: Grovedale (ASB0017)

Maximum 3 day rental if there is a line-up.

Equipment must be cleaned before returned. If returned dirty a cleaning fee will be applied.

PANEL TRAILER



DESCRIPTION AND FEATURES

Rental Price: \$50/Day plus GST, \$75 Weekend Rate

Brand: PJ/Real

Working Width: N/A

Transport Width: N/A

Transportation Speed: Posted Limits

Recommended Vehicle to Tow: 1/2 ton

PTO: 540 1000 N/A

HP Requirements: N/A

Motor Driven: Yes No

Hydraulics: N/A

Approximate Equipment Weight:

Hitch Style: 2 5/16" Ball

Location: Grovedale (ASB0038)

Maximum 3 day rental if there is a line-up.

Equipment must be cleaned before returned. If returned dirty, a cleaning fee will be applied.

TAG READER



DESCRIPTION AND FEATURES

Rental Price: No Charge

Brand: Gallagher – HR5 v2

Working Width: N/A

Transport Width: N/A

Transportation Speed: N/A

Recommended Vehicle to Tow: N/A

PTO: 540 1000 N/A

HP Requirements: N/A

Motor Driven: Yes No

Hydraulics: N/A

Approximate Equipment Weight: Under 10 lbs

Hitch Style: N/A

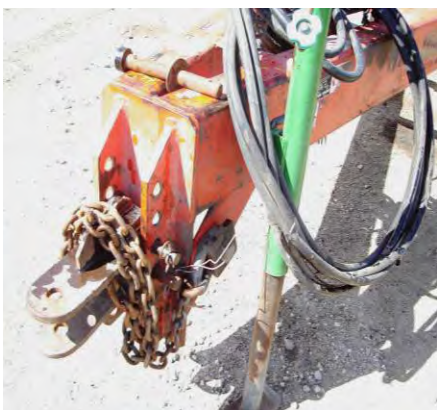
Location: Grovedale (ASB0066)

Note: Battery must be charged before use.

Maximum 3 day rental if there is a line-up.

Equipment must be cleaned before returned. If returned dirty a cleaning fee will be applied.

33' HEAVY HARROW WITH GRANULAR APPLICATOR



DESCRIPTION AND FEATURES

Rental Price: \$200/day plus GST, \$300 Weekend Rate

Brand: Riteway 8100

Working Width: 33'

Transport Width: 14'7"

Transportation Speed: 40 km/h maximum

Recommended Vehicle to Tow: Minimum 3/4 ton

PTO: 540 1000 N/A

HP Requirements: 130 HP minimum

Motor Driven: Yes No

Hydraulics: 4 pair, Pioneer

Approximate Equipment Weight: 8,200 lbs

Hitch Style: Draw Pin

Location: Grovedale (ASB0043)

Maximum 3 day rental if there is a line-up.

Equipment must be cleaned before returned. If returned dirty a cleaning fee will be applied.

30' LAND ROLLER



DESCRIPTION AND FEATURES

Rental Price: \$200/day plus GST, \$300 Weekend Rate

Brand: Riteway

Working Width: 30'

Transport Width: 13'6"

Transportation Speed: 40 km/h maximum

Recommended Vehicle to Tow: F550

PTO: 540 1000 N/A

HP Requirements: 130 HP minimum

Motor Driven: Yes No

Hydraulics: 2 pair, Pioneer

Approximate Equipment Weight: 17,640 lbs

Hitch Style: Unit has single clevis draw pin. Double clevis/ Pintle hitch required for transport.

Location: Grovedale (ASB0035)

Maximum 3 day rental if there is a line-up.

Equipment must be cleaned before returned. If returned dirty a cleaning fee will be applied.

14' HEAVY DISC



DESCRIPTION AND FEATURES

Rental Price: \$300/day plus GST, \$450 weekend rate

Brand: Wishek, 842N

Working Width: 14'

Transport Width: 14'

Transportation Speed: 40 km/hr maximum

Recommended Vehicle to Tow: F550

PTO: 540 1000 N/A

HP Requirements: 150 HP minimum

Motor Driven: Yes No

Hydraulics: 2 Pairs

Approximate Equipment Weight: 13,830 lbs

Hitch Style: draw pin – **double clevis required**

Location: Grovedale (ASB0063)

Maximum 3 day rental if there is a line-up.

Equipment must be cleaned before returned. If returned dirty a cleaning fee will be applied.

HAY SAMPLER



DESCRIPTION AND FEATURES

Rental Price: Free first 3 days (\$5.00 + GST each additional day), \$7.50 Weekend Rate

Brand: Working Width: N/A

Transport Width: N/A

Transportation Speed: N/A

Recommended Vehicle to Tow: N/A

PTO: 540 1000 NA

HP Requirements: N/A

Motor Driven: Yes No

Hydraulics: N/A

Approximate Equipment Weight: Under 10 lbs

Hitch Style: N/A

Location: Grovedale (ASB0082)

Maximum 3 day rental if there is a line-up.

Equipment must be cleaned before returned. If returned dirty a cleaning fee will be applied.

SMALL ANIMAL TRAPS



DESCRIPTION AND FEATURES

Rental Price: \$2/Day plus GST, \$3 Weekend Rate

Brand:

Working Width: N/A

Transport Width: N/A

Transportation Speed: N/A

Recommended Vehicle to Tow: N/A

PTO: 540 1000 N/A

HP Requirements: N/A

Motor Driven: Yes No

Hydraulics: N/A

Approximate Equipment Weight: Under 10 lbs

Hitch Style: N/A

Location: Grovedale (ASB0075)

Maximum 3 day rental if there is a line-up.

Equipment must be cleaned before returned. If returned dirty a cleaning fee will be applied.

GRAIN VAC



DESCRIPTION AND FEATURES

Rental Price: \$150/Day plus GST. \$75 ½ Day Rate, \$225 Weekend Rate

Brand: REM

Working Width: N/A

Transport Width: 98^{3/16}"

Transportation Speed: 40 km/hr maximum

Recommended Vehicle to Tow: 1/2 ton

PTO: 540 1000 N/A

HP Requirements: Tractor -100 HP for cleanup, or 85 HP for full bin load-out

Motor Driven: Yes No

Hydraulics: 1 pair, pioneer

Approximate Equipment Weight: 2,950 lbs

Hitch Style: Pintle

Location: Grovedale (ASB0025)

Maximum 3 day rental if there is a line-up.

Equipment must be cleaned before returned. If returned dirty a cleaning fee will be applied.

BALE HAULER



DESCRIPTION AND FEATURES

Rental Price: \$250/Day plus GST, \$375 Weekend Rate

Brand: 2020 Anderson RBM 2000

Working Width: 13'1"

Transport Width: 11'4"

Transportation Speed: 40 km/h maximum

Recommended Vehicle to Tow: Minimum 1 ton

PTO: 540 1000 N/A

HP Requirements: 180 HP minimum

Motor Driven: Yes No

Hydraulics: 2 Pair Pioneer Ends

Approximate Equipment Weight: **Unloaded:** 7,455 lbs **Loaded:** 37,000 lbs

Hitch Style: Double Clevis

Location: Grovedale (ASB0106)

Maximum 3 day rental if there is a line-up.

Equipment must be cleaned before returned. If returned dirty a cleaning fee will be applied.

WATER PUMP AND PIPE TRAILER



DESCRIPTION AND FEATURES

Rental Price: \$250 first 48 hrs, then \$250.00 each additional 24 hrs plus GST (April 2 - Oct 31)*

Brand:

Working Width:

Transport Width:

Transportation Speed: 40 km/h Maximum

Recommended Vehicle to Tow: F550

PTO: 540 1000 NA

HP Requirements: 80 HP for pump, 100 HP to pull unit

Motor Driven: Yes No

Hydraulics: N/A

Pipe: Approximate 1 mile

Approximate Equipment Weight: 15,000 lbs (Trailer)

Hitch Style: Draw Pin

Location: Grovedale (ASB0040)

Maximum 3 day rental if there is a line-up.

Equipment must be cleaned before returned. If returned dirty a cleaning fee will be applied.

***Off season rates at Managers Discretion:** \$500 first 48 hrs, then \$500.00 each additional 24 hrs plus GST (Nov 1 - April 1)